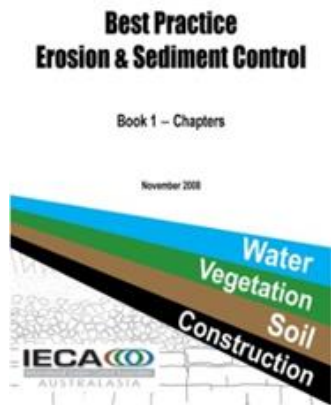




Centre for Environmental Training

# Erosion and Sediment Control Brisbane, QLD



5-8 March 2024



International Erosion Control Association Approved  
Professional short course training in Australasian  
best practice in Erosion and Sediment Control

in conjunction with



## Erosion and Sediment Control

### *Erosion and Sediment Control*

- Four one-day professional development workshops
- A comprehensive and integrated course for practitioners
- Based on the IECA Best Practice in Erosion and Sediment Control Manual (2008)
- Includes detailed coverage of the revised Appendix B (2018) including Type A and Type B sediment basins
- Experienced, passionate, knowledgeable and engaging trainers; Bill Johnson and Kel Sanson

### *Workshop 1: Fundamentals of Erosion and Sediment Control*

Workshop 1 covers the regulatory requirements, basic soil science, problem soils and how, when and why to use various erosion and sediment control products and practices. It provides independent guidance on the selection, suitability and application of temporary and permanent erosion and sediment control measures on construction and development sites. The workshop includes exercises on reading and understanding real-world examples of Erosion and Sediment Control Plans.

#### **Workshop content:**

- Legal Considerations for Erosion and Sediment Control
- Theory of Erosion and Sediment Control
- Soils, Problem Soils and Soil Conservation
- Selection and Implementation of Erosion and Sediment Control Products and Techniques

### *Workshop 2: How to Use the IECA Guidelines*

Workshop 2 reviews the contents of the IECA Best Practice in Erosion and Sediment Control Manual and provides guidance, including the use of a flowchart, on how to use the manual for developments in Queensland. Participants require a calculator.

#### **Workshop content:**

- Site Assessment and Site Planning
- Erosion Hazard Assessment and Use of the RUSLE Equation
- Where to Find Relevant Information in the IECA Document
- Drainage, Erosion and Sediment Control Standards in accordance with IECA 2008
- Working in Watercourses

- Group Exercises – Planning for Erosion and Sediment Control on Construction Sites and Preparing an Erosion and Sediment Control Plan for a Single Lot Construction Site

### *Workshop 3: Water Management on Construction Sites*

Workshop 3 trains those responsible for the design of erosion and sediment control measures on development sites. This workshop focuses mainly on sediment basins and water diversion structures, two key features of any Erosion and Sediment Control Plan. Participants should bring a notebook, pen and, if possible, a laptop computer. Software will be provided.

#### **Workshop content:**

- Theory of Water Management
- Application of Water Management on Construction Sites
- Sizing and Designing Types A, B, C and D Sediment Basins
- Calculating Flows for Design of Catch Drains and Diversion Structures
- Practical Examples and Real-life Practice Exercises – Small Construction Sites, Rail Corridors, Creek Crossings and Pipelines

### *Workshop 4: Preparing and Reviewing Erosion and Sediment Control Plans*

Workshop 4 draws together the information presented in the earlier workshops. It covers the identification and design of erosion and sediment control measures on development sites and their delineation on a plan. It involves extensive group work and practical exercises to prepare and review ESCPs on major projects. Participants should ideally bring a laptop computer to complete the various exercises (one between two or three participants is acceptable).

#### **Workshop content:**

- Site Inspections, Use of Checklists and Key Points to Check
- Guided Practical Examples and Real-life Practice Exercises in ESCP Preparation and Review for Major Commercial and Road Developments

Participants can attend one, two, three or all four workshops, although must complete the previous workshops before attending the latter days. Registrations for single workshops 2, 3 and 4 will not be accepted unless the prior day's workshops have been completed. For example, participants can register for workshops 3 and 4, as long as workshops 1 and 2 have been completed on a previous course.

## Erosion and Sediment Control

### Who should attend these workshops?

- Site construction personnel
- Developers and Consultants
- Civil and Environmental Engineers
- Local and State Government Officers and Regulators
- Those responsible for reviewing Erosion and Sediment Control and Soil and Water Management Plans
- Others wishing to update their knowledge in line with the current best practice approaches in the guidelines

### Access to the Manual

All attendees should have access to the IECA (2008) Best-Practice Erosion and Sediment Control Manual during the workshops, or should be able to share a copy with a colleague.

The course includes numerous examples and exercises that require the use of this document.

Having a personal copy available during the workshops will enable attendees to make notes on, or flag, those pages and sections that are most relevant to their work. **We strongly recommend that each attendee have a copy of this text.**

IECA Best Practice in Erosion and Sediment Control Manual can be downloaded free of charge from the IECA website. <https://austieca.com.au/publications/best-practice-erosion-and-sediment-control-bpesc-document>

Other required course documents and software will be provided prior to the course and at workshop 3.

### Course Presenters



Bill Johnson  
CPESC



Kel Sanson  
CPESC

### Course Enrolment Form (3608)

If you would like to enrol in this course, please complete your details below or on-line at:

<https://www.environmentaltraining.com.au/course-schedule/>

Participant Name

Organisation

Billing Address

Postcode

Purchase Order Number

(If required by your organisation for invoicing purposes)

Tel

e-mail

#### PLEASE REGISTER ME FOR:

Workshop 1: Fundamentals of Erosion and Sediment Control **5 March 2024**

Workshop 2: How to Use the IECA Guidelines **6 March 2024**

Workshop 3: Water Management on Construction Sites **7 March 2024**

Workshop 4: Preparing and Reviewing ESCPs **8 March 2024**

One workshop \$1,075 + GST

Two workshops \$2,085 + GST

Three workshops \$2,910 + GST

Four workshops \$3,590 + GST

Course fee includes comprehensive course notes, software as indicated, lunches and morning and afternoon teas. Each participant will receive a certificate outlining the detailed content and duration of the course. Please bring required materials as noted in the brochure.

**Course Venue:** Pacific Hotel – 345 Wickham Terrace, Spring Hill QLD.

**Course Hours:** 9.00am – 5.00pm each day.

**Payment Terms and Conditions:** Payment can be made by EFT or credit card (a 2.6% surcharge applies). Places will be confirmed upon receipt of payment into our account. If you are unable to attend a course, you will need to advise us of cancellation at least 14 days prior to the course otherwise no refund will be provided. A full refund will be given where notice of cancellation is given more than 14 days before the course. 10% administration charge is applicable to all course transfers due to illness/non-attendance.

### Professional Training in Erosion and Sediment Control

These workshops provide a comprehensive and integrated program of instruction and exercises. Workshops are approved by the International Erosion and Sediment Control Association (IECA). [IECA-Approved](#) training is delivered by providers who are regarded as technically proficient in erosion and sediment control. Training that is "IECA Approved" should always accord with recognised best-practice techniques.

### Further E&SC Courses

These workshops:

Workshop 1: Fundamentals of Erosion and Sediment Control  
Workshop 2: How to Use the IECA Guidelines  
Workshop 3: Water Management on Construction Sites  
Workshop 4: Preparing and Reviewing SWMPs/ESCPs

and for those working in specific industry sectors, specialised Erosion and Sediment Control Courses for:

- **Main Road and Rail Construction and Maintenance**
- **Unsealed Roads \***
- **Coal Seam Gas Operations \***
- **Services and Linear Easements**
- **Mines and Quarries**
- **Waste Landfills \***

along with our very popular courses:

- **Practical Erosion and Sediment Control for the Workforce \* (1-day)**
- **Selecting and Installing Erosion and Sediment Control Measures \* (half-day)**
- **Erosion and Sediment Control for Compliance Inspections \* (1-day)**

can be run as in-house courses at any location.



**IECA Approved Training**

**Please contact us to discuss your training requirements.**

**The Centre for Environmental Training**  
197 Main Road

Cardiff NSW 2285 Australia

Telephone: 02 4954 4997

e-mail: [mail@environmentaltraining.com.au](mailto:mail@environmentaltraining.com.au)

web: [www.environmentaltraining.com.au](http://www.environmentaltraining.com.au)